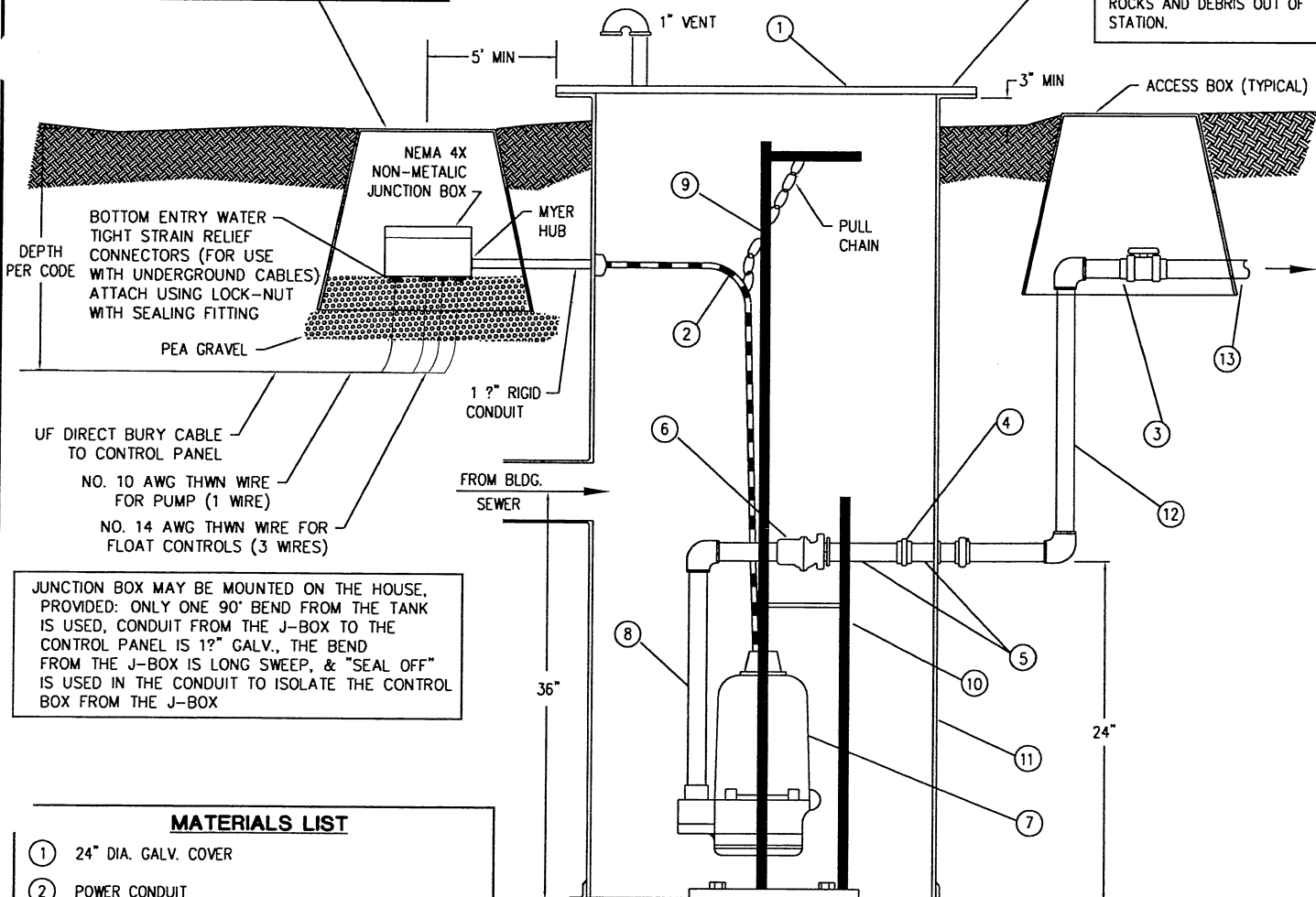


ACCESS BOX:  
 NON-TRAFFIC AREAS - EQUAL TO CARSON MODEL  
 1419-14B, WITH 1419-2B COVER  
 TRAFFIC AREAS - H-20 RATED CONCRETE BOX  
 EQUAL TO FOGTITE B9? METER BOX  
 LIDS SHALL BE MARKED ELECTRICAL OR SEWER  
 RESPECTIVELY OR HAVE NO MARKINGS AT ALL

NOTE:  
 TOP CAN BE SET FLUSH WITH  
 GROUND, IF A CONCRETE PAD  
 IS Poured AROUND THE LIFT  
 STATION AND SLOPE AWAY  
 FROM THE STATION. KEEP  
 ROCKS AND DEBRIS OUT OF  
 STATION.



JUNCTION BOX MAY BE MOUNTED ON THE HOUSE,  
 PROVIDED: ONLY ONE 90° BEND FROM THE TANK  
 IS USED, CONDUIT FROM THE J-BOX TO THE  
 CONTROL PANEL IS 1 1/2" GALV., THE BEND  
 FROM THE J-BOX IS LONG SWEEP, & "SEAL OFF"  
 IS USED IN THE CONDUIT TO ISOLATE THE CONTROL  
 BOX FROM THE J-BOX

**MATERIALS LIST**

- ① 24" DIA. GALV. COVER
  - ② POWER CONDUIT
  - ③ 1 1/2" PVC TRUE UNION BALL VALVE (SS)  
HAYWARD OR EQUAL
  - ④ 1 1/2" GALV. UNION
  - ⑤ 1 1/2" GALV. NIPPLES
  - ⑥ CHECK VALVE & PUMP DISCONNECT  
HYDRAMATIC OR EQUAL
  - ⑦ 2 HP GRINDER PUMP - SEE NOTES
  - ⑧ 1 1/2" GALVANIZED PIPING, APPROX. 1.2' LENGTH
  - ⑨ HOT DIPPED GALVANIZED STEEL RAIL  
GUIDE SYSTEM
  - ⑩ HOT DIPPED GALVANIZED PUMP TECH  
SHORT RAIL
  - ⑪ 24" x 60" FIBERGLASS TANK
  - ⑫ 1 1/2" PVC OR PE
  - ⑬ 1 1/2" PE DISCHARGE PIPE TO SERVICE CONNECTION
- NOT SHOWN FOR CLARITY: CONTROL FLOATS, SEE NOTES

1. PKG. GRINDER LIFT STA. SHALL BE PUMPTech "PACKAGE RESIDENTIAL STATION"  
 AS MANUFACTURED BY PUMPTech INC.

2. PACKAGE STATION TO INCLUDE THE FOLLOWING ITEMS:  
 - SEWAGE GRINDER PUMP HYDRAMATIC SPG 200 M2 SERIES HYDRO-GRIND SEWAGE PUMP.  
 - PACKAGE CONTROL SYSTEM FOR SIMPLEX STATIONS CONSISTING OF: HYDRAMATIC SIMPLEX  
 Q CONTROL PANEL AND 3 MERCURY LEVEL FLOAT SWITCHES. ALL ELECTRICAL WORK SHALL  
 BE COMPLETED AND READY FOR HOOKUP TO OWNER SUPPLIED POWER. ALL J BOXES, AND  
 CONTROL ENCLOSURES SHALL BE NEMA 4X.  
 - FILAMENT WOUND 24"x 60" FIBERGLASS BASIN WITH #11 GAUGE GALV. STEEL COVER, VENT AND  
 SUPPLIED WITH STAINLESS STEEL HOLD-DOWN BOLTS.  
 - PUMP GUIDE RAIL SYSTEM FOR REMOVAL OF PUMP UNIT SHALL BE AS MANUFACTURED BY  
 PUMPTech. ALL EXPOSED SURFACES ON GUIDE RAIL SYSTEM SHALL BE  
 HOT DIPPED GALV. STEEL COATED INCLUDING LIFTING CHAIN.  
 - VALVES AND PIPING CONSISTING OF 1 1/2" HYDRAMATIC BALL CHECK VALVE W/HYDRAULICALLY  
 SEALED DISCHARGE FLANGE.

3. THE SYSTEM SHALL OPERATE BY THREE CONTROL FLOATS. ON SUMP LEVEL RISE, THE FIRST  
 FLOAT SHALL BE ACTIVATED BUT WILL NOT TURN ON THE PUMP. AS THE LEVEL CONTINUES TO RISE,  
 THE SECOND FLOAT WILL BE ACTIVATED AND WILL START THE PUMP SEQUENCE. WHEN THE LEVEL FALLS  
 TO THE FIRST FLOAT, THE PUMP WILL TURN OFF. IF THE LEVEL CONTINUES TO RISE ABOVE THE  
 SECOND FLOAT, THE THIRD FLOAT SHALL BE ACTIVATED, ENERGIZING THE AUDIO AND VISUAL ALARMS.

4. THE PACKAGE SYSTEM SHALL MEET THE REQUIREMENTS OF THE DEPT. OF L&I, ELECT. INSPECTION  
 DIVISION FOR RESIDENTIAL, GRINDER PUMP SYSTEMS.

5. OWNER SUPPLIED ELECTRICAL SERVICE:  
 230 VOLT SINGLE PHASE POWER WITH A 30 AMP BREAKER FOR THE PUMP, AND 110 VOLT  
 ELECTRICAL POWER WITH A 20 AMP BREAKER FOR THE ALARM SYSTEM. MOUNT 40" - 60" ABOVE  
 GRADE, AND PROTECT AGAINST SPLASHING WATER FROM THE HOUSE GUTTER OR EAVE.

**GRINDER PUMP LIFT STATION**

**SEWER STANDARD DETAIL**

**SNOQUALMIE PASS  
 UTILITY DISTRICT**

FILE	SCALE	DATE
SPUDTS13	NTS	7/22/04